



Grass Roots Harvest

Sample 189-012422-068

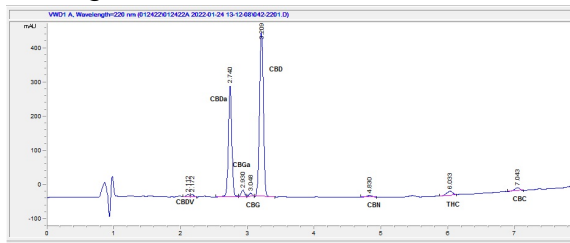
Moon J

Sample Submitted: 01-24-2022; Report Date: 01-26-2022

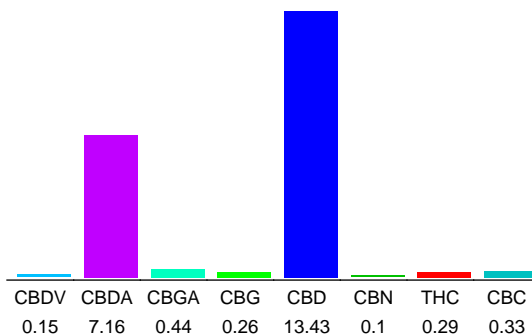
## Moon J

Plant Material: Flower

### Chromatogram



### Cannabinoid Profile



### Cannabinoid Profile by HPLC

**0.29%**  
Calculated THC Yield

**19.71%**  
Calculated CBD Yield

**22.16%**  
Total Cannabinoids

Cannabinoid	% wt	mg/g
CBDV	0.15	1.5
CBDA	7.16	71.6
CBGA	0.44	4.4
CBG	0.26	2.6
CBD	13.43	134.3
CBN	0.1	1.0
THC	0.29	2.9
CBC	0.33	3.3
<b>Total Cannabinoids</b>	<b>22.16</b>	<b>221.6</b>
<b>Calculated THC Yield</b>	<b>0.29</b>	<b>2.90</b>
<b>Calculated CBD Yield</b>	<b>19.71</b>	<b>197.09</b>

Calculated Maximum THC Yield = THC + 0.877 \* THCA  
 Calculated Maximum CBD Yield = CBD + 0.877 \* CBDA

#### Marin Analytics, LLC

250 Bel Marin Keys Blvd, Suite D4  
Novato, CA 94949

415-936-6477 / sarabiancalana1@gmail.com

*Sara Biancalana*  
**Sara Biancalana**  
 Chief Scientist

This sample has been tested by Marin Analytics, LLC using valid testing methodologies and a quality system. Values reported relate only to the sample tested. Marin Analytics, LLC makes no claims as to the efficacy, safety or other risks associated with any detected or non-detected levels of any compounds reported herein. This Certificate shall not be reproduced except in full, without the written approval of Marin Analytics, LLC.