



Grass Roots Harvest

Sample 189-121421-058

Harmony CBD Honey

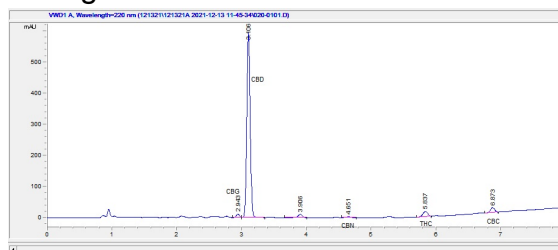
Sample Submitted: 12-14-2021; Report Date: 12-15-2021

Sample Density: 1400 mg/ml; Sample Unit Size: 84.00 g

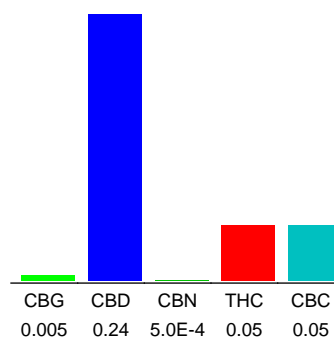
## Harmony CBD Honey

Edible

### Chromatogram



### Cannabinoid Profile



### Cannabinoid Profile by HPLC

**0.05%**  
Calculated THC Yield

**0.24%**  
Calculated CBD Yield

**0.35%**  
Total Cannabinoids

Cannabinoid	% wt	mg/ml	mg/unit
CBG	0.005	0.07	4.2
CBD	0.24	3.36	201.6
CBN	0.0005	0.007	0.42
THC	0.05	0.7	42.0
CBC	0.05	0.7	42.0
<b>Total Cannabinoids</b>	<b>0.35</b>	<b>4.8</b>	<b>290.2</b>
<b>Calculated THC Yield</b>	<b>0.05</b>	<b>0.70</b>	<b>42.00</b>
<b>Calculated CBD Yield</b>	<b>0.24</b>	<b>3.36</b>	<b>201.60</b>

Calculated Maximum THC Yield =  $THC + 0.877 * THCA$   
 Calculated Maximum CBD Yield =  $CBD + 0.877 * CBDA$

**Marin Analytics, LLC**  
 250 Bel Marin Keys Blvd, Suite D4  
 Novato, CA 94949  
 415-936-6477 / sarabiancalana1@gmail.com

*Sara Biancalana*  
**Sara Biancalana**  
 Chief Scientist

This sample has been tested by Marin Analytics, LLC using valid testing methodologies and a quality system. Values reported relate only to the sample tested. Marin Analytics, LLC makes no claims as to the efficacy, safety or other risks associated with any detected or non-detected levels of any compounds reported herein. This Certificate shall not be reproduced except in full, without the written approval of Marin Analytics, LLC.